



# Huckitta Project

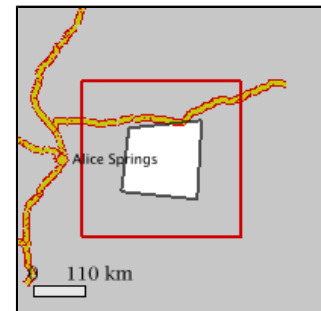
*NT NRM Snapshot*



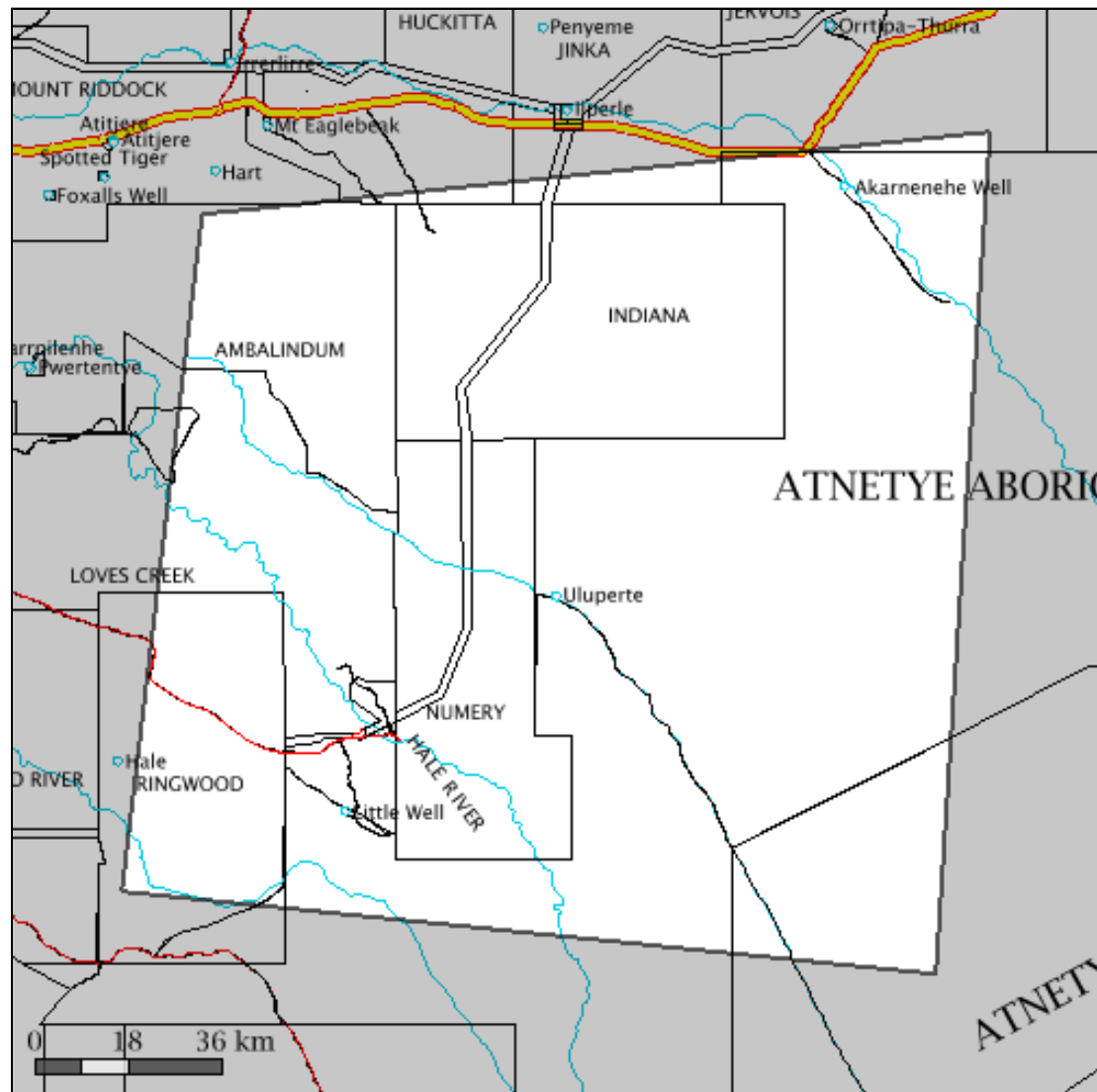
# Huckitta Project

Huckitta Project encompasses an area of 20338.69 sq km extending from 22 deg 57.0 min to 24 deg 24.0 min S and 134 deg 56.0 min to 136 deg 26.0 min E.

Huckitta Project is located in the Simpson Strzelecki Dunefields, MacDonnell Ranges, Burt Plain, bioregion(s)



Location of Huckitta Project



# Huckitta Project Climate

The closest long-term weather station is RINGWOOD (23 deg 49.0 min S, 134.9555E) 76 km W of the center of selected area

## Statistics

Mean max temp (deg C)  
Mean min temp (deg C)  
Average rainfall (mm)  
Average days of rain

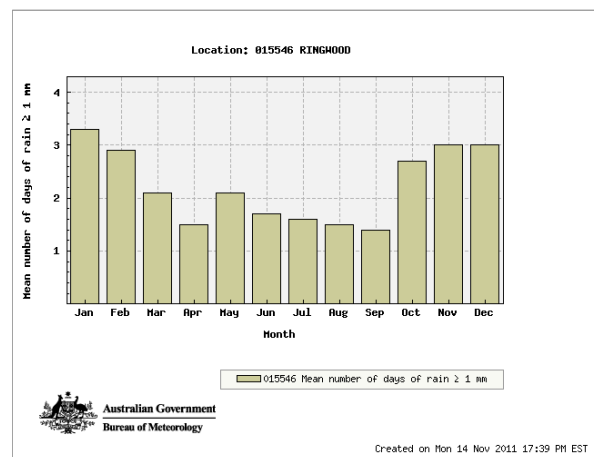
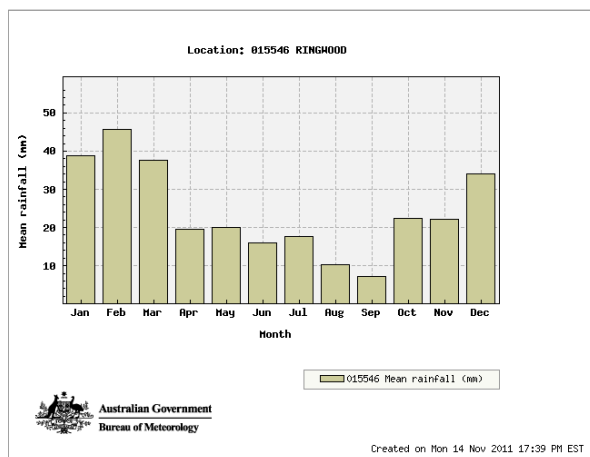
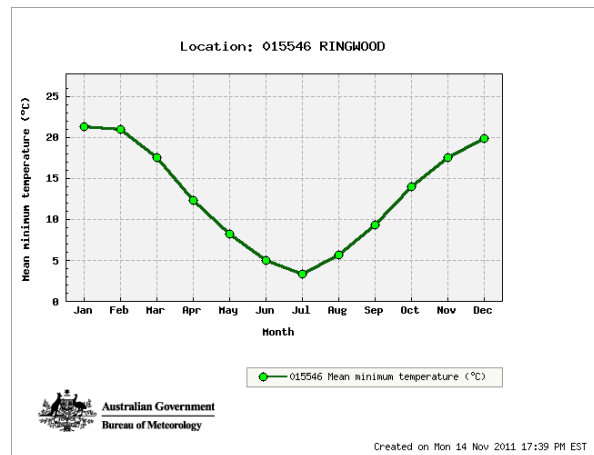
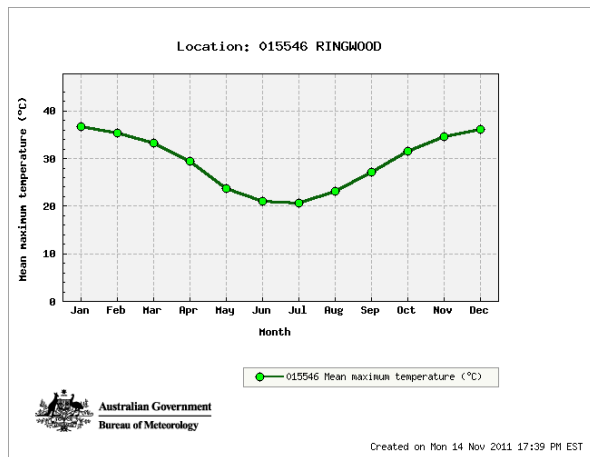
## Annual Values

29.4  
12.9  
291.9  
26.8

## Years of record

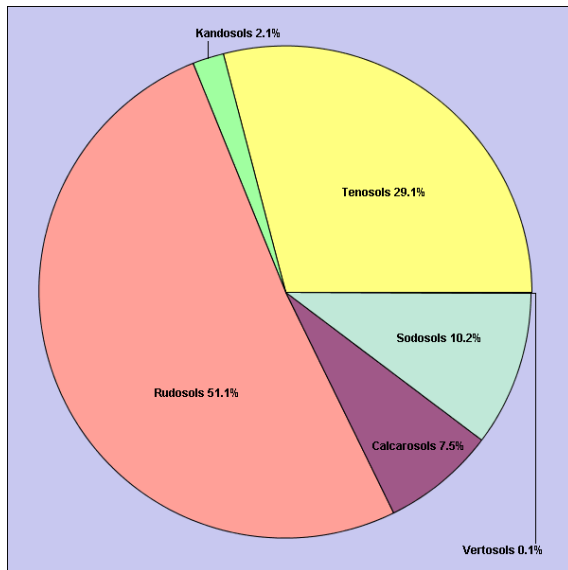
16  
16  
51  
50

Climate summaries from Bureau of Meteorology ([www.bom.gov.au](http://www.bom.gov.au))



# Huckitta Project Soils

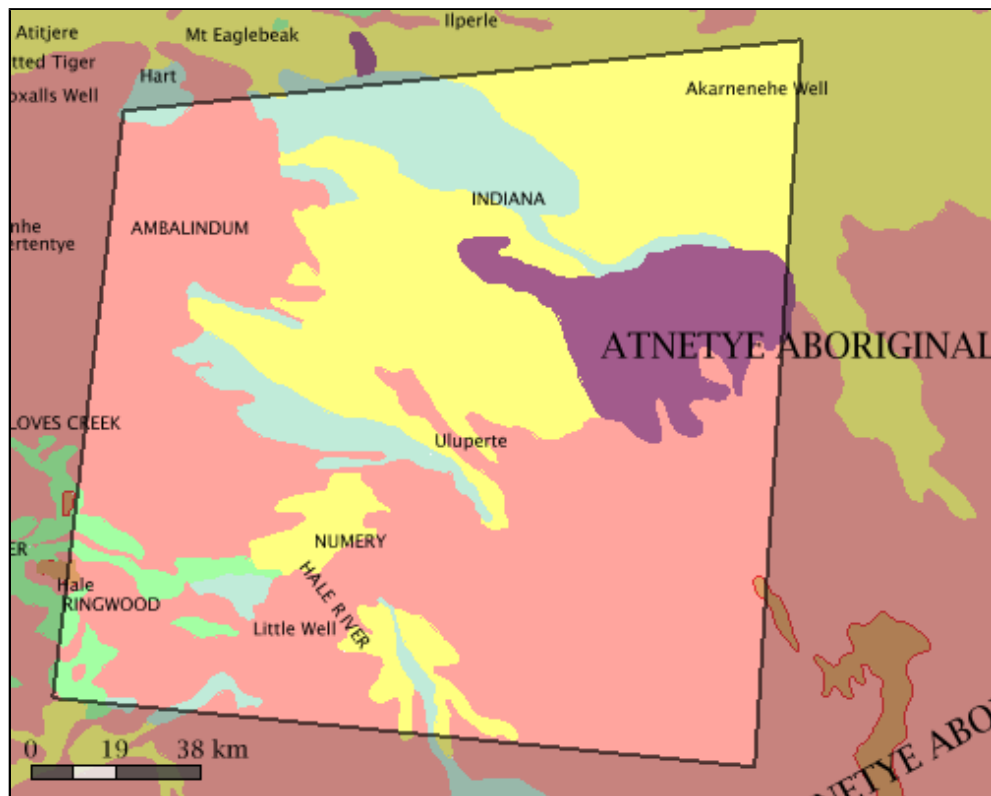
## Soil Types



## Area of soil types (Northcote Factual Key)

Category	Area sq km	Area%
Tenosols	5909.48	29.06
Kandosols	417.24	2.05
Rudosols	10399.77	51.13
Calcarosols	1520.17	7.47
Sodosols	2072.26	10.19
Vertosols	19.77	.10

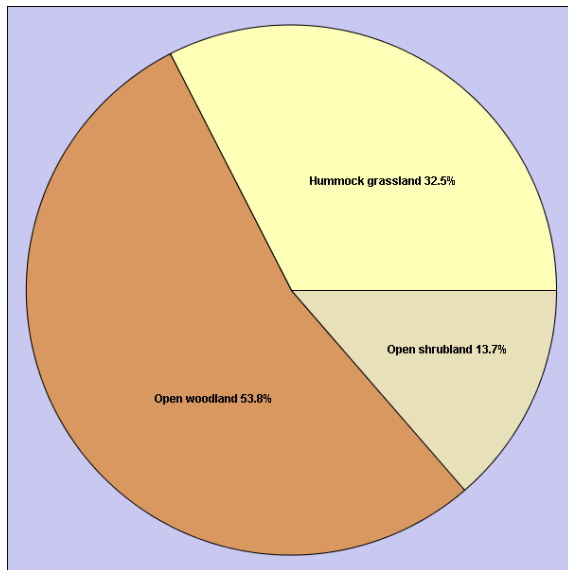
## Soil Types



Soils 1:2M Layer is a copy of the NT portion (1:2,000,000 scale dataset) of the CSIRO Atlas of Australian Soils - K.H. Northcote et al. Data scale: 1:2,000,000 ANZLIC Identifier: 2DBC771205D06B6E040CD9B0F274EFE  
More details: Go to [www.nt.gov.au/nreta/nretamaps/](http://www.nt.gov.au/nreta/nretamaps/) and enter the ANZLIC identifier in the Spatial Data Search

# Huckitta Project Vegetation

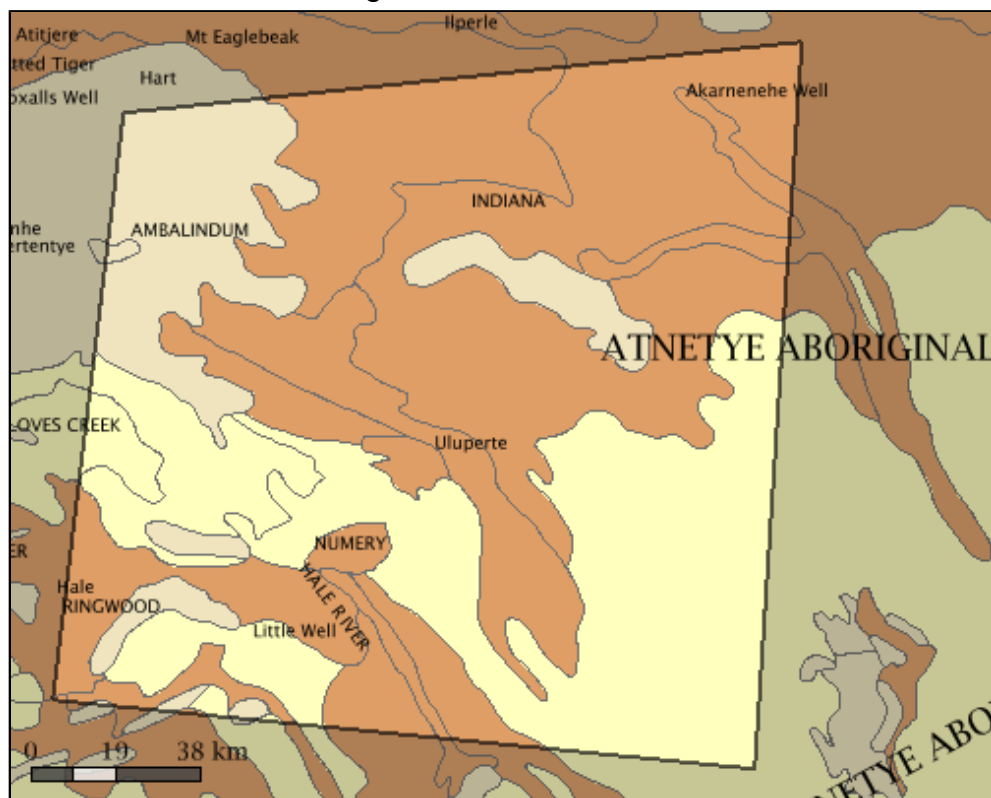
## Vegetation Communities



## Area of vegetation communities

Category	Area sq km	Area%
Hummock grassland	6614.78	32.52
Open woodland	10945.98	53.82
Open shrubland	2777.85	13.66

## Vegetation Communities



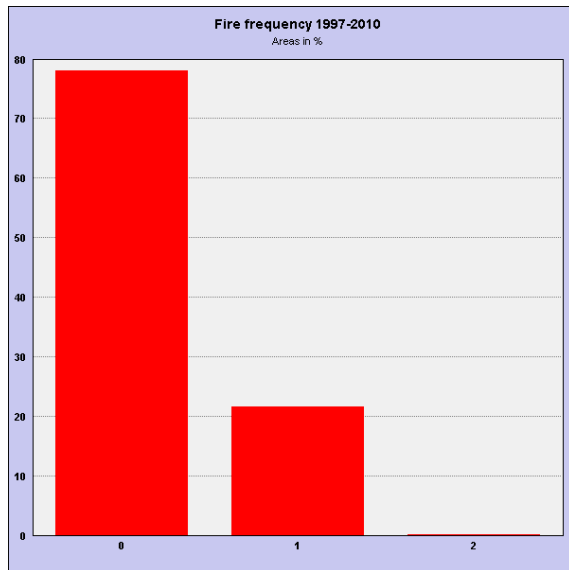
The NVIS 2005 Layer is compiled from a number of vegetation and land unit survey maps that were recoded and re-attributed for the National Vegetation Information System (NVIS)

Data scale variable depending on location. ANZLIC Identifier:2DBC771207006B6E040CD9B0F274EFE

More details:Go to [www.nt.gov.au/nreta/nretamaps/](http://www.nt.gov.au/nreta/nretamaps/) and enter the ANZLIC identifier in the Spatial Data Search

# Huckitta Project Fire History

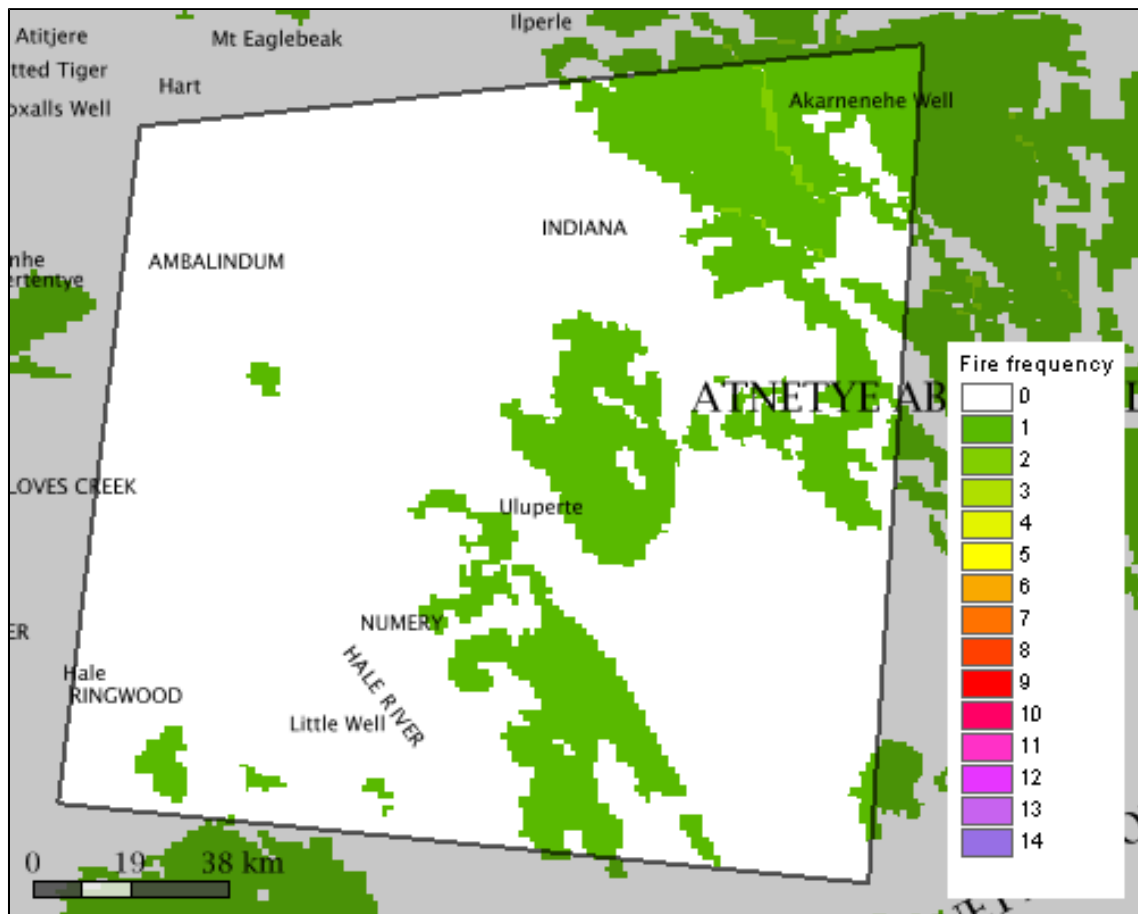
Years burnt 1997-2010



and area burnt in each category

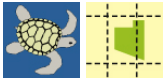
Category	Area sq km	Area%
0	15897.33	78.16
1	4403.60	21.65
2	37.76	.19

Years burnt 1997-2010



The fire frequency (1km) Layer is derived from satellite imagery sourced from the Advanced Very High Resolution Radiometer (AVHRR) on NOAA satellites  
Spatial Resolution: 1.1m x 1.1km pixels (at Nadir) Extent: whole of NT

# Huckitta Project Threatened Species



Threatened species recorded in the grid cell(s) in which Huckitta Project occurs

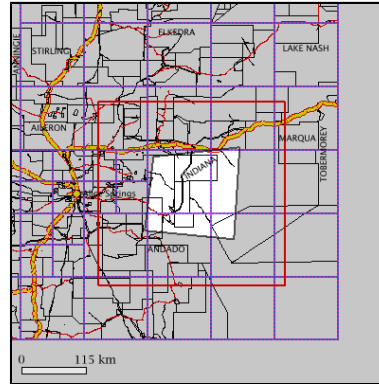
Group	Common Name	Scientific Name	NT Status	National Status	ID
Cycads	MacDonnell Ranges Cycad	<i>Macrozamia macdonnellii</i>	.	VU	351325
Flowering Plants	Caldwells Clubrush	<i>Bolboschoenus caldwellii</i>	EN	.	351005
Flowering Plants	Glory-of-the-Centre	<i>Ricinocarpus gloria-medii</i>	VU	VU	351445
Flowering Plants	Waddy Wood	<i>Acacia peuce</i>	EN	VU	251397
Flowering Plants	Birds Nest Wattle	<i>Acacia pickardii</i>	VU	VU	350935
Flowering Plants	Valley Fuschia Bush	<i>Eremophila prostrata</i>	VU	VU	351155
Flowering Plants	Minnie Daisy	<i>Minuria tridens</i>	VU	VU	351375
Flowering Plants	Daisy-Bush	<i>Olearia macdonnellensis</i>	VU	VU	351415
Snails	Land Snail	<i>Dirutrachia sublevata</i>	VU	.	351905
Snails	Land Snail	<i>Granulomelon grandituberculatum</i>	VU	.	351935
Snails	Land Snail	<i>Semotrachia esau</i>	VU	.	351985
Snails	Land Snail	<i>Semotrachia huckittana</i>	VU	.	352015
Snails	Land Snail	<i>Semotrachia jinkana</i>	VU	.	352045
Snails	Watt's Land Snail	<i>Vidumelon wattii</i>	VU	.	352095
Reptiles	Slater's Egernia	<i>Egernia slateri</i>	EN	EN	351475
Birds	Emu	<i>Dromaius novaehollandiae</i>	VU	.	176363
Birds	Australian Bustard	<i>Ardeotis australis</i>	VU	.	176354
Birds	Australian Painted Snipe	<i>Rostratula australis</i>	VU	VU	246428
Birds	Princess Parrot	<i>Polytelis alexandrae</i>	VU	VU	247138
Birds	Night Parrot	<i>Pezoporus occidentalis</i>	CR	EN	247103
Birds	Yellow Chat	<i>Epthianura crocea</i>	.	VU/-	597103
Birds	Hooded Robin	<i>Melanodryas cucullata</i>	EN/-	EN/-	597046
Mammals	Brush-tailed Mulgara	<i>Dasyercus blythi</i>	VU	VU	351695
Mammals	Crest-tailed Mulgara	<i>Dasyercus hillieri</i>	VU	EN	351695
Mammals	Long-tailed Dunnart	<i>Sminthopsis longicaudata</i>	VU	.	351775
Mammals	Golden Bandicoot	<i>Isodon auratus</i>	EN	VU	176421
Mammals	Greater Bilby	<i>Macrotis lagotis</i>	VU	VU	177125
Mammals	Common Brushtail Possum (southern)	<i>Trichosurus vulpecula vulpecula</i>	EN	.	177146
Mammals	Black-footed Rock-wallaby	<i>Petrogale lateralis</i>	.	VU	351635
Mammals	Southern Marsupial Mole	<i>Notoryctes typhlops</i>	VU	EN	352105
Mammals	Dusky Hopping-mouse	<i>Notomys fuscus</i>	EN	VU	351725

EX = Extinct  
 EW = Extinct in the Wild  
 ER = Extinct in the NT  
 EN = Endangered  
 EN/VU = One Endangered subspecies/One Vulnerable subspecies

VU=Vulnerable  
VU/- = One or more subspecies vulnerable EN/- = One or more subspecies endangered

More species info: Go to [www.landmanager.org.au/view/index.aspx?id=####](http://www.landmanager.org.au/view/index.aspx?id=####)  
where #### is the ID number from the tables above for the species of interest.

Species listed in the table above were recorded from all the grid cells shown below (red/blue line) that overlap Huckitta Project





# Huckitta Project Weeds and Potential Weeds

Introduced plants recorded in the grid cell(s) in which Huckitta Project occurs and that have been identified as problem weeds in one or more locations in northern Australia. Occurrence based on Department of Natural Resources, Environment and The Arts databases.

Common Name	Scientific Name	NT Status	National Status	Other Status	ID
Mediterranean Turnip	<i>Brassica tournefortii</i>	.	.	Gr	288814
Rubber Bush	<i>Calotropis procera</i>	B C (S of 16.5 deg S)	.	WA1 WA2 G&M	288914
Buffel Grass	<i>Cenchrus ciliaris</i>	.	.	MP Gr G&M DEU	643089
Mossman River Grass	<i>Cenchrus echinatus</i>	B C	.	NSW	289124
Feathertop Rhodes Grass	<i>Chloris virgata</i>	.	.	DEU	289354
Lesser Swinecress	<i>Coronopus didymus</i>	.	.	G&M	392931
Fierce Thornapple	<i>Datura ferox</i>	A C	.	WA1 WA3 WA4 G&M	289904
Native Thornapple	<i>Datura leichhardtii</i>	C	.	WA1 WA3 WA4	289904
Stinkgrass	<i>Eragrostis cilianensis</i>	.	.	DEU	372308
Spiked Malvastrum	<i>Malvastrum americanum</i>	.	.	DEU	291084
Creeping Wood-sorrel	<i>Oxalis corniculata</i>	.	.	NSW	291584
Castor Oil Plant	<i>Ricinus communis</i>	B C	.	MP CYP NSW	292264
Coffee Senna	<i>Senna occidentalis</i>	B C	.	G&M DEU	292474
Flannel Weed	<i>Sida cordifolia</i>	B C	.	WA1 G&M DEU	292594
Caltrop	<i>Tribulus terrestris</i>	B C	.	CYP SA	361555
Sweet Acacia	<i>Vachellia farnesiana</i>	.	.	DEU	288164

Status Codes:

1. NATIONAL STATUS CODES

Alert, Alert List for Environmental Weeds (Please call Exotic Plant Pest Hotline 1800 084 881 if you think you have seen this weed)

Sleeper, National Sleeper Weed

Target, Targeted for eradication. ([www.landmanager.com.au/view/index.aspx?id=449837](http://www.landmanager.com.au/view/index.aspx?id=449837))

WONS, Weeds of National Significance

2. NT STATUS CODES

A, NT Class A Weed (to be eradicated)

B, NT Class B Weed (growth & spread to be controlled)

C, NT Class C Weed (not to be introduced) ([www.landmanager.com.au/view/index.aspx?id=449869](http://www.landmanager.com.au/view/index.aspx?id=449869))

3. OTHER STATUS CODES

C&E, Csurhes, S. & Edwards, R. (1998) Potential Environmental Weeds in Australia. Candidate Species for Preventative Control. Environment Australia, Canberra ([www.landmanager.com.au/view/index.aspx?id=394504](http://www.landmanager.com.au/view/index.aspx?id=394504))

CYP, Draft Cape York Peninsula Pest Management Plan 2006-2011 ([www.landmanager.com.au/view/index.aspx?id=371200](http://www.landmanager.com.au/view/index.aspx?id=371200))

DEU, Plants listed as environmental weeds by the Desert Uplands Strategic Land Resource

Assessment ([www.landmanager.com.au/view/index.aspx?id=332123](http://www.landmanager.com.au/view/index.aspx?id=332123))

G&M, Grice AC, Martin TG. 2005. The Management of Weeds and Their Impact on Biodiversity in the Rangelands. Cooperative Research Centre (CRC) for Australian Weed Management and CSIRO Sustainable Ecosystems. Commonwealth Australia ([www.landmanager.com.au/view/index.aspx?id=163572](http://www.landmanager.com.au/view/index.aspx?id=163572))

Gr, Groves et al. 2003. Weed categories for natural and agricultural ecosystem management. Bureau of Rural Sciences ([www.landmanager.com.au/view/index.aspx?id=388018](http://www.landmanager.com.au/view/index.aspx?id=388018))

K0, High Priority Weeds not yet established in the Katherine region

K1, High Priority Weeds posing environmental threats in the Katherine region

K2, High Priority Weeds posing existing threats in the Katherine region, as described in the Katherine Regional Weed Management Strategy 2005-2010 ([www.landmanager.com.au/view/index.aspx?id=130286](http://www.landmanager.com.au/view/index.aspx?id=130286))

MP, Northern Territory Parks & Conservation Masterplan ([www.landmanager.com.au/view/index.aspx?id=144141](http://www.landmanager.com.au/view/index.aspx?id=144141))

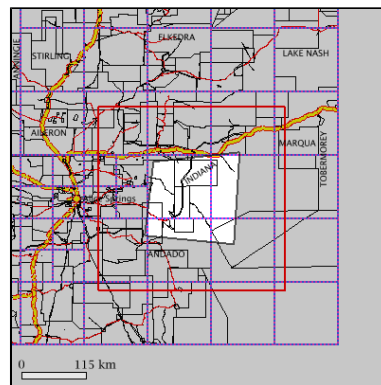
NAQS, North Australian Quarantine Strategy Target List ([www.landmanager.com.au/view/index.aspx?id=449416](http://www.landmanager.com.au/view/index.aspx?id=449416))

NSW, Declared Noxious Weed in NSW ([www.landmanager.com.au/view/index.aspx?id=449983](http://www.landmanager.com.au/view/index.aspx?id=449983))

Q1, QLD Class 1 Weed (not to be introduced, kept or supplied)  
Q2, Class 2 Weed (eradicate where possible, not to be introduced, kept or supplied)  
Q3, Qld Class 3 Weed (to be controlled near environmentally sensitive areas- not to be supplied/sold without a permit) ([www.landmanager.com.au/view/index.aspx?id=190714](http://www.landmanager.com.au/view/index.aspx?id=190714))  
SA, Declared Plant in South Australia ([www.landmanager.com.au/view/index.aspx?id=449996](http://www.landmanager.com.au/view/index.aspx?id=449996))  
WeedsAus, Listed as a significant weed by Weeds Australia ([www.landmanager.com.au/view/index.aspx?id=14576](http://www.landmanager.com.au/view/index.aspx?id=14576))  
WA1, WA Weed Class P1 (movement prohibited)  
WA2, WA Weed Class P2 (aim to eradicate)  
WA3, WA Weed Class P3 (control infestations)  
WA4, WA Weed Class P4 (prevent spread)  
WA5, WA Weed Class P3 (control infestations on public land) ([www.landmanager.com.au/view/index.aspx?id=449884](http://www.landmanager.com.au/view/index.aspx?id=449884)).

More species info: Go to [www.landmanager.org.au/view/index.aspx?id=####](http://www.landmanager.org.au/view/index.aspx?id=####)  
where #### is the ID number from the tables above for the species of interest.

Plants listed in the table above were recorded from all the grid cells shown below (red/blue line) that overlap Huckitta Project



# Huckitta Project Pest and Potential Pest Animals

Animals with pest potential recorded in the bioregion(s) in which Huckitta Project occurs. Occurrence based on Department of Natural Resources, Environment and The Arts databases.

Common Name	Scientific Name	NT Status	National Status	ID
Cane Toad	<i>Chaunus marinus</i>	P	.	183252
Asian House Gecko	<i>Hemidactylus frenatus</i>	P	.	188964
Flower-pot Blind Snake	<i>Ramphotyphlops braminus</i>	P	.	189084
Rock Dove	<i>Columba livia</i>	P	.	183336
Red-tailed Black-Cockatoo	<i>Calyptrorhynchus banksii</i>	N	.	223765
Long-billed Corella	<i>Cacatua tenuirostris</i>	N	.	223779
Sulphur-Crested Cockatoo	<i>Cacatua galerita</i>	N	.	223772
Common Starling	<i>Sturnus vulgaris</i>	P	.	188980
House Mouse	<i>Mus musculus</i>	P	.	187720
Brown Rat	<i>Rattus norvegicus</i>	P	.	189155
Black Rat	<i>Rattus rattus</i>	P	.	183236
Dingo / Wild dog	<i>Canis lupus</i>	N	.	183280
Fox	<i>Vulpes vulpes</i>	P	.	183294
Cat	<i>Felis catus</i>	P	.	183259
Rabbit	<i>Oryctolagus cuniculus</i>	P	.	187331
Donkey	<i>Equus asinus</i>	P	.	183287
Horse	<i>Equus caballus</i>	P	.	183315
Pig	<i>Sus scrofa</i>	P	.	183329
Camel	<i>Camelus dromedarius</i>	P	.	183210
Cattle	<i>Bos indicus</i> / <i>Bos taurus</i>	P	.	183266
Goat	<i>Capra hircus</i>	P	.	183301

## NT STATUS CODES:

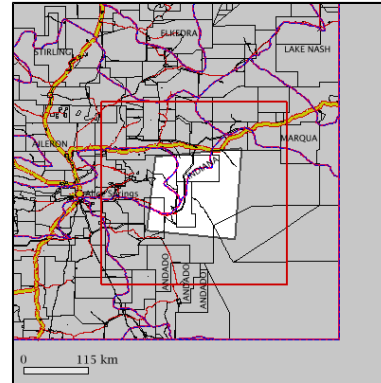
Int, Introduced species (all non-prohibited vertebrates, and all other exotic species ([www.landmanager.com.au/view/index.aspx?id=280771](http://www.landmanager.com.au/view/index.aspx?id=280771)))

N, Native species with pest potential.

P, Prohibited species (all exotic vertebrates except those listed as non-prohibited ([www.landmanager.com.au/view/index.aspx?id=450509](http://www.landmanager.com.au/view/index.aspx?id=450509)))

More species info: Go to [www.landmanager.org.au/view/index.aspx?id=####](http://www.landmanager.org.au/view/index.aspx?id=####)  
where #### is the ID number from the tables above for the species of interest.

Potential pest animals listed in the table above were recorded from the bioregions shown below (red/blue line) that overlap Huckitta Project



Soils and vegetation graphs and tables refer to area of soils and vegetation only. Fire graphs and tables refer to entire selected area including sea if present. Calculations are derived from map images or vector data, and should be taken as a guide only. Accuracy cannot be guaranteed. For small areas, figures should be rounded to the nearest whole number.